

# MOBILITY ABROAD – ACADEMIC STAFF

Lisa Broadwell, International Relations Officer  
International Centre



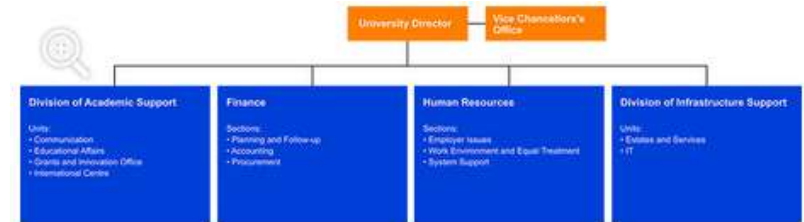
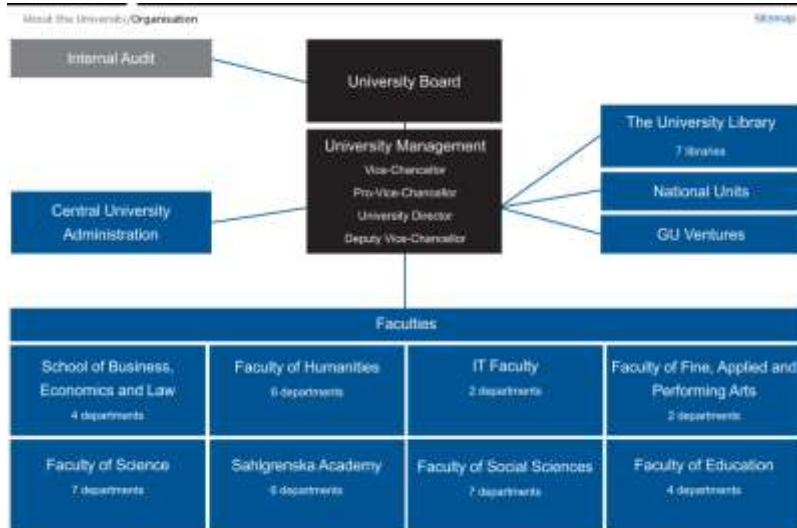
# Overview

- International Centre – who we are, what we do
- Opportunities abroad – focus on opportunities for academic staff, including doctoral students



# International Centre

# International Centre – part of Central University Administration



# What we do

- Hold broad and deep internationalization expertise
- Provide guidance and support to University leadership, students and staff
- Track of new directions and opportunities in internationalization and work together with you (the departments/faculties) to facilitate internationalization in practice
- Strongly believe that increased internationalization at all levels contributes to stronger quality of the University's education and research programmes.



# Who we are

## **Team Europe**

Overall responsibility for applications and follow-up of the mobility programme Erasmus+, along with the development of collaborations within Europe, including EUTOPIA

## **Team Application and Project Support**

Supports staff who are seeking funding for international education and collaboration projects.

## **Team Networks and Projects**

Coordinates the university's participation in international networks and projects.

## **Team Agreements and Mobility**

Coordinates and develops the university's joint international partnerships focused on student mobility and international student recruitment.

## **Team Student Recruitment**

Is a strategic support for faculties for recruitment of international students and is responsible for handling tuition fees and scholarships (Axel Adler Scholarship) for fee paying students.

# Opportunities abroad

Focus on academics, including PhD students

# Why internationalisation, and why abroad?

- Gain new inspiration, insights and perspectives on your field/your work
  - Share best practices with colleagues abroad, and bring back ideas
  - Build contacts and expand networks
  - Explore opportunities to build meaningful cooperations with other universities (joint courses and programmes, double degrees, etc).
  - Opportunity to showcase what you do abroad; opportunity to attract MA, PhD students
  - Become an ambassador and role model for colleagues and students
- ...in many cases for as few as 2 days.



## ERASMUS+ in brief

The Erasmus+ programme supports education, training, youth and sport in Europe. It provides financial support so that millions of European residents (and beyond) have the possibility to teach, train, or study abroad.

Not just for students. There is something for everyone.

## Erasmus+ for staff

For **all GU employees**, including part-time staff, PhD students, as well as technical and administrative staff. No EU-citizenship requirement. **PhD students** can also participate in the student mobility options (study abroad, traineeships)

**The purpose** of the planned trip determines which type of mobility you apply for.

Can support the department's internationalisation strategy. Staff mobility can even be the first step towards, or help develop or maintain a strategic partnership.

## Erasmus+ teacher exchange

- Teach students at a partner university at the bachelor, master, and/or PhD levels
- Flexible. Can be lectures, seminars, workshops, advising, examinations, etc.
  - Minimum 8 contact hours per week (proportional after 1 full week)
  - Combined teaching & training: minimum reduced to 4 hours per week
- Requires an active, valid Inter-institutional agreement (IIA) – including teaching mobility - between the two departments/universities.
- Minimum requirement is two days, max two months
- Encouraged to combine with other activities (research, visit, proposal planning/writing, meetings, etc) as long as the requirements above are fulfilled.

# Erasmus+ staff training

- **Training abroad related to your work duties. Open to \*all\* staff.**
- Skills development
  - Job shadowing
  - Short courses
  - Workshops
  - [staff training weeks](#)
  - (not academic conferences)
- No partnership agreement (IIA) required.
- Does not have to be at a university. Can be at a company, organisation, institute, etc.
- Two day minimum, maximum one month (check with me if longer)
- Max three on the same trip with the same aims (More than three? Check with me.)

# Erasmus+ staff mobility (teaching & training): How and when to apply

Applications in the form of a completed, fully executed Mobility Agreement

Submit in good time ***before the start of the mobility.***

***Accepted on a rolling basis (except during vacation period – July/August)***

- **IC contact:** Lisa Broadwell

# Erasmus+ staff mobility (teaching & training): About the money...

- Two-part grant calculation, lump sum transfer
  - Travel: based on distance between Göteborg and the host city
  - Daily rate: based on the host country and number of days (work period + max 2 travel days).
  - Vice-Chancellor's fund: sending department reimbursed an additional 50% to offset overhead, where overhead is taken.

# Erasmus+ grant: Additional financing

- Let me know if...
  - You plan for "green" travel – e.g., longer train trips
  - You have special needs – e.g., require housing with special accommodations, Sign Language interpreter, etc.
  - PhD student traveling with a child/children (Erasmus student mobility types)

## PhDs

- Have even more flexibility to choose Erasmus+ mobility type.
- Eligible for both student and staff mobility types.
- New for 2021-2027: Erasmus+ study exchange and traineeship options – only 5 day minimum (not 2 months)!
- Depends on the goal, activities, and duration.
- [Dedicated doctoral student website](#) (evolving).



# Where you can go ERASMUS+ programme countries



- Travel within:
  - The 26 EU countries (i.e., excluding Sweden)
  - EES countries: Iceland, Lichtenstein, Norway
  - North Macedonia; Serbia, Turkey
- \* **NB:** also includes Outermost regions (overseas departments) and overseas countries and territories, such as: Canary Islands, Martinique, Guadeloupe, Aruba, Greenland, and more.



## Other opportunities – EUTOPIA

- European University network – [EUTOPIA](#) – new model for higher ed in Europe
- Six European HEI partners: GU + Vrije Universiteit Brussel (Belgium); CY Cergy Paris Université (France); University of Ljubljana (Slovenia); Pompeu Fabra University- Barcelona (Spain); University of Warwick (UK)
- Sustainability, inclusion, external collaboration, and international cooperation are the focus for both education and research, and students' input and influence are key.
- Design education of the future
- EU funding to help the network carry out a variety of pilot projects – including activities specifically for PhD students, researchers, and more.

## Other opportunities – EUTOPIA – activity examples

- Mobility programme for PhD students across the partner universities
- Mobility programme for researchers across the partner universities
- Post-doctoral fellowships to attract early-career researchers from around the world
- Creating and offering Learning Units
- And more... see the [EUTOPIA website](#), especially “Opportunities” and “Students” for additional information and opportunities to apply for financing or otherwise get involved

## Other opportunities – International collaborations

- [International collaborations](#) (contact [icaps@gu.se](mailto:icaps@gu.se)), such as
  - Erasmus+ International Credit Mobility – project-partnerships for mobility to a "partner" country (basically, any non-programme country)
  - Linnaeus-Palme (staff and student exchanges, developing countries)
  - Joint/Double degrees, such as Nordic Master or Erasmus Mundus
  - Erasmus+ Capacity Building
  - Erasmus+ Innovation Alliances
  - Various STINT
  - And much more...

## Other opportunities – Global networks and projects

- Network involvement enables:
  - Knowledge and experience - benchmarking
  - Joint projects
  - Mobility exchange - students and staff
  - Business intelligence - influence the policy / lobbying
  - Locating cooperation and project partners
  - Strengthening education and research contacts
- Many opportunities specifically for PhD students and early career researchers
- See [here for more information and contacts](#)

# University-wide projects





# University-wide networks





# Incoming staff teaching or training

## Who?

- Incoming teacher from an enterprise. (GU's Erasmus funding).
- Incoming staff training (sending university's Erasmus funding).
- Incoming teacher from a partner university (sending university's Erasmus funding).

## Why?

Internationalisation at home.

Incoming staff can share their skills and perspectives with a wider group of colleagues and students here.

Cost comes largely in your time.

## More information

Internationalisation – [landing page](#) for staff – information, links, forms, important dates, and more

[Contacts](#) – including International Centre, as well as Welcome Services (new and incoming international guests, staff; international student welcome programme and housing), Grants and innovation office (FIK), and more.

[UHR](#) (Sweden's Erasmus+ national agency) – plus UHR's [utbyten.se](#) site.

# Questions? Interested?

Lisa Broadwell  
International Relations Officer  
email: [lisa.broadwell@gu.se](mailto:lisa.broadwell@gu.se)

International Centre  
Box 100  
Visiting address: Rosenlundsgatan 4 (vån. 3)

